



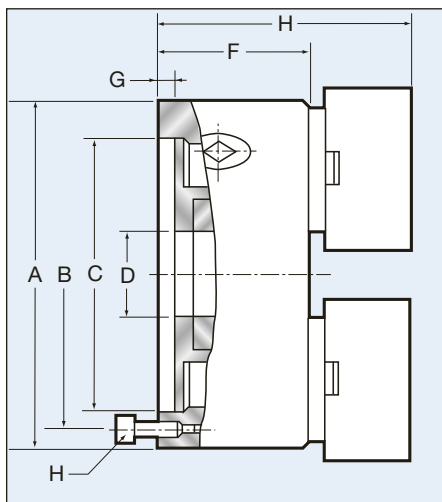
Atlas Workholding 2-Jaw Self Centering Scroll Chucks

Flatback - Top Reversible Jaws

- ⊕ American standard two-piece tongue and groove jaws
- ⊕ Scroll and jaws hardened and ground
- ⊕ Sizes 6", 8", 10", 12" 15" 20" and 25",
- ⊕ Top reversible jaws
- ⊕ Semi-steel body
- ⊕ Comes with master jaws and top jaws, T-wrench and mounting screws
- ⊕ One year warranty

Manual Chucks
with Mounting Plates

Chuck Size	Flatback Chuck No.	Camlock type D Spindle Size	Chuck No.	Type L Spindle Size	Chuck No.	Type A Spindle Size	Chuck No.	Threaded Type Spindle Size	Chuck No.
6"	0624-2000	D-3	0624-20D3	L-00	0624-2L00	A-4	0624-20A4	1-1/2-8	0624-2041
6"		D-4	0624-20D4	L-0	0624-20L0	A-5	0624-20A5	1-3/4-8	0624-2042
6"								2-1/4-8	0624-2043
6"								2-3/8-6	0624-2046
8"	0824-2000	D-4	0824-20D4	L-00	0824-2L00	A-5	0824-20A5	2-1/4-8	0824-2043
8"		D-5	0824-20D5	L-0	0824-20L0	A-6	0824-20A6	2-3/8-6	0824-2046
8"		D-6	0824-20D6						
10"	1024-2000	D-5	1024-20D5	L-0	1024-20L0	A-5	1024-20A5	2-1/4-8	1024-2043
10"		D-6	1024-20D6	L-1	1024-20L1	A-6	1024-20A6	2-3/8-6	1024-2046
10"		D-8	1024-20D8			A-8	1024-20A8		
12"	1224-2000	D-6	1224-20D6	L-0	1224-20L0	A-6	1224-20A6		
12"		D-8	1224-20D8	L-1	1224-20L1	A-8	1224-20A8		
12"		D-11	1224-20D11	L-2	1224-20L2				
15"	1624-2000	D-6	1624-20D6	L-1	1624-20L1	A-8	1624-20A8		
15"		D-8	1624-20D8	L-2	1624-20L2	A-11	1624-20A11		
15"		D-11	1624-20D11						
20"	2024-2000	D-8	2024-20D8	L-1	2024-20L1	A-8	2024-20A8		
20"		D-11	2024-20D11	L-2	2024-20L2	A-11	2024-20A11		
25"	2424-2000	D-8	2424-20D8	L-2	2424-20L2	A-8	2424-20A8		
25"		D-11	2424-20D11			A-11	2424-20A11		



Dimensional Data 2-Jaw Self Centering Scroll Chucks

Chuck Dia.	A	B	C	D	E	F	G	H	Weight
6"	6.299"	5.591"	5.118"	1.575"	4.291"	2.559"	0.197"	3-M8	22 lbs.
8"	7.874"	7.087"	6.496"	2.559"	4.803"	2.953"	0.197"	3-M10	35 lbs.
10"	9.843"	8.898"	8.110"	3.150"	5.276"	3.150"	0.197"	3-M12	51 lbs.
12"	12.795"	11.654"	10.709"	3.937"	6.102"	3.780"	0.472"	3-M16	99 lbs.
15"	14.961"	13.780"	12.795"	5.315"	6.181"	3.858"	0.236"	3-M16	155 lbs
20"	19.685"	18.307"	17.323"	8.268"	8.268"	4.528"	0.236"	6-M16	262 lbs
25"	24.803"	23.425"	22.047"	10.630"	8.582"	5.256"	0.276"	6-M16	460 lbs

HOW TO ORDER: State quantity, chuck number, and shipping instructions.